

PRODUCT DESCRIPTION

- Impressive lighting of large rooms with high ceilings
- Bi-directional lighting (two-sided line of light)
- Possibility to mount vertically, horizontally or diagonally
- Can be used with up to 14mm wide LED strips
- Extended range of additional accessories

FINISH :

Silver anodized

*Custom colors available upon request



Fill empty fields

Product nr.

Fixture type

Company

Job name

Date

TECHNICAL SPECIFICATION

Application

- for decorating large rooms with high ceilings, e.g. interiors of public facilities (stations, shopping malls, theatres, libraries, staircases, etc.)
- for spatial light installations
- for the construction of linear lighting fixtures which illuminate at a wide light angle

Assembly

- on cables and conductive rods, through end caps

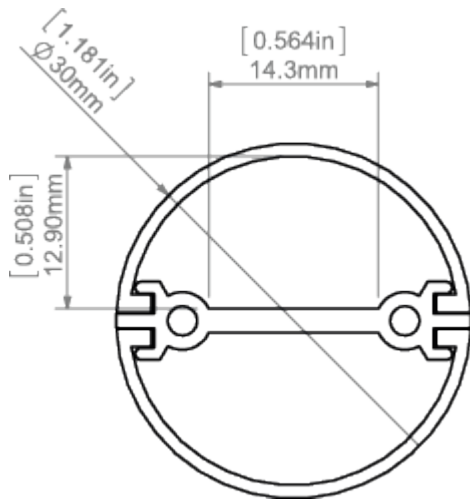
Additional information

For lighting fixtures with increased power consumption and long suspension, it is recommended to use a conductive end cap with a hole through which a wire with a suitable gauge wire can be run.

- end caps firmly mounted with the use of bolts with decorative heads
- low voltage power
- durable structure
- very little aluminium visible
- large lighting surface
- space for LED strip: 14.3 mm

AVAILABLE LENGTHS

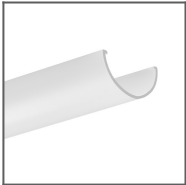
| Ref. nr. | surface finish | available lengths |
|--------------|-----------------|-------------------|
| C0788ANODA_1 | Silver anodized | 1000mm |
| C0788ANODA_2 | Silver anodized | 2000mm |
| C0788ANODA_3 | Silver anodized | 3000mm |

TECHNICAL DRAWING

RELATED PRODUCTS

COVERS

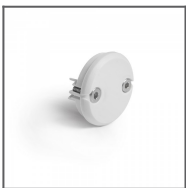
FROSTED COVERS



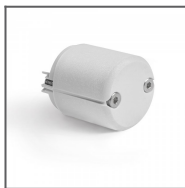
JAZ-DUO frosted
Cover
Ref: 17163

END CAPS

REGULAR END CAPS



JAZ-DUO-N grey
End cap
Ref: 42641

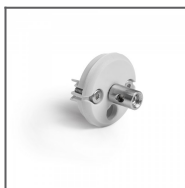


JAZ-DUO-W grey
End cap
Ref: 42642

REGULAR END CAPS WITH HOLE



JAZ-DUO-N-OTW
grey End cap
Ref: 42644

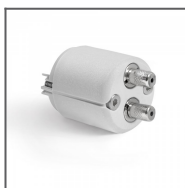


JAZ-DUO-N-FI-6,5
grey End cap
Ref: 42643

ELECTRICITY CONDUCTIVE END CAPS



JAZ-DUO-N grey
electricity
conductive End
cap
Ref: 42632



JAZ-DUO-W grey
electricity
conductive End
cap
Ref: 42633

ACCESSORIES

FASTENERS & MOUNTING ACCESSORIES



Isolated CU cable
FI-1.35 mm
Ref: 70310

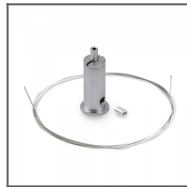
MOUNTING SETS



RG-1 Fastener set
black
Ref: 42647L9005



RG-1 Fastener set
silver
Ref: 42647NI



RG-1 Fastener set
silver satin
Ref: 42647GSS

SEALING COMPONENTS



6x1,2 Gland
Ref: 00802

MARKETING MATERIALS



Foam 70342
Ref: 70342



Display
P230-90173M
Ref: 90173M