

PRODUCT DESCRIPTION

- Easy assembly and disassembly with magnets
- For light and medium lighting fixtures with one or two LED strips
- Invisible mounting bracket

Fill empty fields

Product nr.

Fixture type

Company

Job name

Date



TECHNICAL SPECIFICATION

Application

- attaching lighting fixtures to ferromagnetic metal surfaces

Mounting

- to the profile with a small lock and a screw

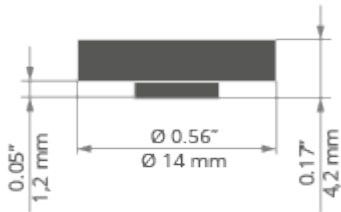
Additional information

- the set includes 3 mounting brackets
- maximum load-bearing capacity for a single mounting bracket: 1 kg
- recommendation:
 - 3 mounting brackets every 1 m of the lighting fixture
for light lighting fixtures for one LED strip
 - 4 mounting brackets every 1 m of the lighting fixture
for medium lighting fixtures for up to two LED strips
- it is recommended to use 1 securing line per 1 m of any fixture
- if lighting fixtures are equipped with a power supply or other components, 1 additional mounting bracket should be used for every additional 100 g of load
- avoid hitting the mounting bracket against hard surfaces and hitting the side of the mounted lighting fixture
- CAUTION! The following factors have a negative effect on the load-bearing capacity of the mounting bracket and may lead to detachment of the fixture:
 - mounting to rough, uncleaned or uneven surfaces
 - environments with a high concentration of hydrogen

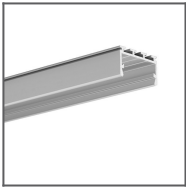
strongly acidic or alkaline environments

exposure to radioactive radiation

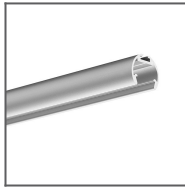
TECHNICAL DRAWING



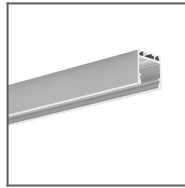
RELATED PROFILES



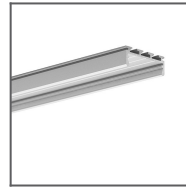
GIZA-LL profile
Ref: C0758



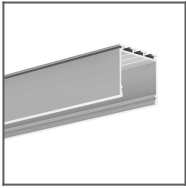
OLEK Profile
Ref: B8505



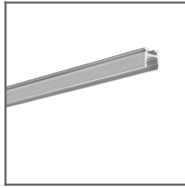
PDS-ZM Profile
Ref: B7696



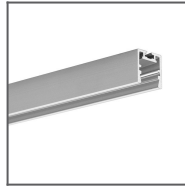
GIZA Profile
Ref: B5556



LIPOD Profile
Ref: B5554



PIKO-ZM Profile
Ref: C1168



PDS-ZM-PLUS
Profile
Ref: C2056

RELATED PRODUCTS

ACCESSORIES



ZM-1 Securing
line
Ref: 70520



ZM-2 Securing
line
Ref: 70521