

## PRODUCT DESCRIPTION

- Easy assembly and disassembly with magnets
- For medium and heavy lighting fixtures with two or more LED strips
- Invisible mounting bracket

Fill empty fields

Product nr.

Fixture type

Company

Job name

Date



## TECHNICAL SPECIFICATION

### Application

- attaching lighting fixtures to ferromagnetic metal surfaces

### Mounting

- to the profile with a small lock and a screw

### Additional information

- the set includes 4 mounting brackets
- maximum load-bearing capacity for a single mounting bracket: 5 kg
- recommendation:
  - 3 mounting brackets every 1 m of the lighting fixture
  - 6 mounting brackets every 2 m of the lighting fixture
  - 8 mounting brackets every 3 m of the lighting fixturefor medium lighting fixtures for up to two LED strips
  - 4 mounting brackets every 1 m of the lighting fixture
  - 7 mounting brackets every 2 m of the lighting fixture
  - 10 mounting brackets every 3 m of the lighting fixturefor heavy lighting fixtures for up to two or more LED strips
- it is recommended to use 1 securing line per 1 m of any fixture
- if lighting fixtures are equipped with a power supply or other components, 1 additional mounting bracket should be used for every additional 200 g of load

- avoid hitting the mounting bracket against hard surfaces and hitting the side of the mounted lighting fixture
- CAUTION! The following factors have a negative effect on the load-bearing capacity of the mounting bracket and may lead to detachment of the fixture:

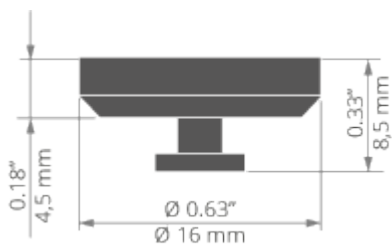
mounting to rough, uncleaned or uneven surfaces

environments with a high concentration of hydrogen

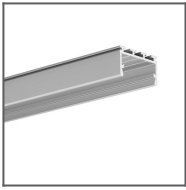
strongly acidic or alkaline environments

exposure to radioactive radiation

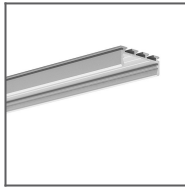
## TECHNICAL DRAWING



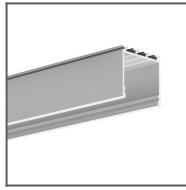
RELATED PROFILES



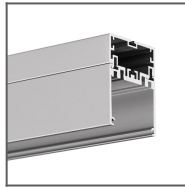
GIZA-LL profile  
Ref: C0758



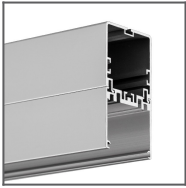
GIZA Profile  
Ref: B5556



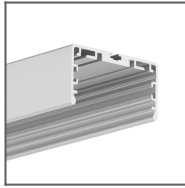
LIPOD Profile  
Ref: B5554



4050 Profile  
Ref: 18050



4050-W Profile  
Ref: 18051



LIPOD-50 Profile  
Ref: C2609

**RELATED PRODUCTS**

**ACCESSORIES**



ZM-1 Securing  
line  
Ref: 70520



ZM-2 Securing  
line  
Ref: 70521