

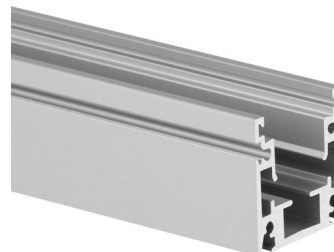
PRODUCT DESCRIPTION

- For installation on facades
- Designed for IP68 and IK10 protection ratings
- Corrosion resistance at high salinity
- Corresponds to the width of the HR-MAX facade system
- Adjustable lighting angle

FINISH :

Silver anodized

*Custom colors available upon request



Fill empty fields

Product nr.

Fixture type

Company

Job name

Date

TECHNICAL SPECIFICATION

Application

- decorative lighting

Mounting

- to the surface, using dedicated accessories
- the cover is cut to the length of the profile

Additional information

- possibility to fasten the lighting fixture with the back or side to the mounting surface
- possibility of smooth transition from a surface-mounted into a recessed fixture

Linia światła

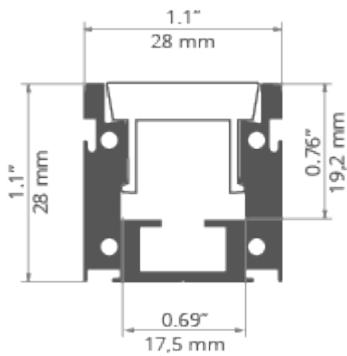
✓ = Linia światła

X = Widoczne punkty

Profil:	Model LED:	HR-21 mleczna
HR-OPTI		
	1210	✓
	1220	✓
	1275	✓
	0530	✓
	1910	✓

AVAILABLE LENGTHS

Ref. nr.	surface finish	available lengths
C1844ANODA_1	Silver anodized	1000 mm
C1844ANODA_2	Silver anodized	2000 mm
C1844ANODA_3	Silver anodized	3000 mm

TECHNICAL DRAWING

RELATED PROFILES



HR-OPTI System
Ref: C1844 (HR-
OPTI) + 42121

RELATED PRODUCTS

COVERS

SEMI-TRANSPARENT COVERS



HR-21 frosted
Cover
Ref: 17152

END CAPS

STEEL



HR-OPTI-STN End
cap
Ref: 24387

ACCESSORIES

FASTENERS & MOUNTING ACCESSORIES



HR-OPTI Mounting
bracket
Ref: 42121



HR-OPTI-A
Mounting bracket
Ref: _

SEALING COMPONENTS



Hermetic splitter
Ref: 42703



Hermetic coupler
Ref: 42702



M16 x 1.5 Gland
Ref: 42271



M16 x 1,5 - L90
Angular gland
Ref: 42289

MARKETING MATERIALS



Foam 70570
Ref: 70570



Display
P230-90223M
Ref: 90223M