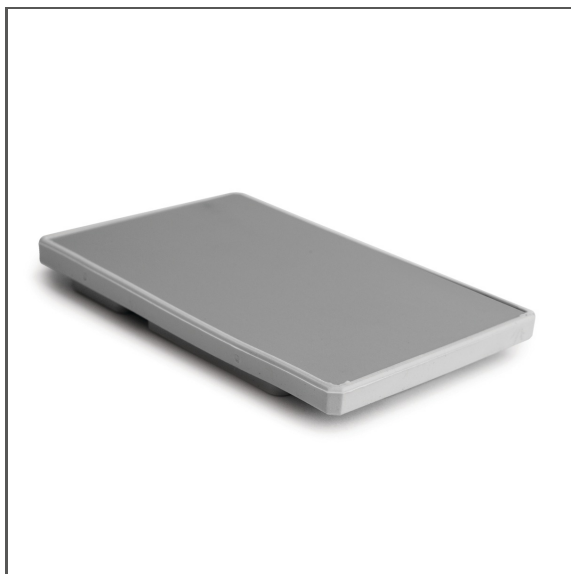


End cap DES

Ref. C28209A01

Ref. arch 42616



- It prevents the ingress of moisture

APPLICATION

- aesthetic finish and protection of the interior of the lighting fixture

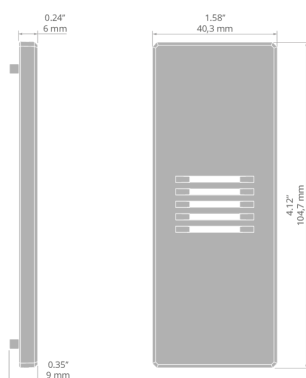
MOUNTING

- to the profile, using bolts (included)

ADDITIONAL INFORMATION

- end-cap composed of three elements

TECHNICAL DRAWING



TECHNICAL SPECIFICATIONS

Material	stainless steel
Color	steel
Shape	rectangular

Height	83 mm
Width	52 mm
Corrosion resistance	yes

End cap DES

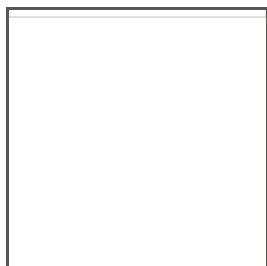
Ref. C28209A01

Ref. arch 42616

RELATED PROFILES > FOR MAIN LIGHTING



DES
A18030
Ref. arch 18030



GLADES
A18036
Ref. arch 18036