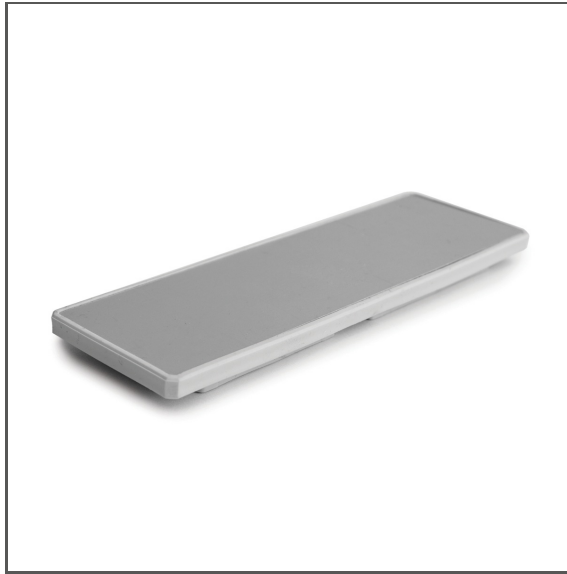


End cap KIDES

Ref. C28210A01

Ref. arch 42617



- It prevents the ingress of moisture

APPLICATION

- aesthetic finish and protection of the interior of the lighting fixture

MOUNTING

- to the profile, using bolts (included)

ADDITIONAL INFORMATION

- end-cap composed of three elements

TECHNICAL DRAWING



TECHNICAL SPECIFICATIONS

Material	stainless steel, aluminum, TPE	Height	38 mm
Color	■ silver	Width	129 mm
Shape	rectangular	Corrosion resistance	yes

RELATED PROFILES > FOR SCONCES AND WALL LIGHTING



KIDES

A18031

Ref. arch 18031