

Fastener PUSZ-PRET-ZM

Ref. 42250



- Lengthwise suspension on a rod
- High lifting capacity
- Single pole conductivity possible

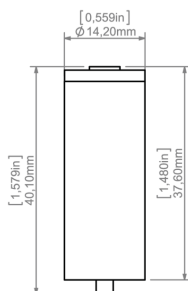
APPLICATION

- for suspending LED lighting fixtures

MOUNTING

- to the lighting fixture, using a small lock
- to the rod, using a plug and nuts

TECHNICAL DRAWING



TECHNICAL SPECIFICATIONS

Material	stainless steel	Conducting electricity	yes
Color	■ silver	Working temperature	53°C
Width	14.2 mm	Lifting capacity	30 kg
Height	40.1 mm	Maximum current	12 A
Diameter	14.2 mm	Loss of voltage	0.06 V

RELATED PROFILES > ARCHITECTURAL



3035
A18039
Ref. arch 18039



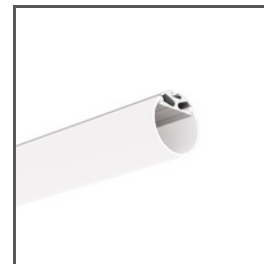
3035-O
A08441
Ref. arch B8441



GIZA
A05556
Ref. arch B5556



GIZA-LL
A00758
Ref. arch C0758



JAZ
A08547
Ref. arch B8547



LIPOD
A05554
Ref. arch B5554

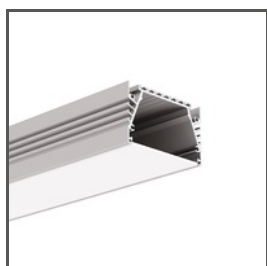


OPK-4
A00370
Ref. arch C0370

RELATED PROFILES > FOR MAIN LIGHTING



LIPOD-50
A02609
Ref. arch C2609



SEPOD
A06593
Ref. arch B6593

RELATED PROFILES > MINIMALISTIC



PIKO-ZM
A01168
Ref. arch C1168

RELATED PROFILES > UNIVERSAL

Fastener PUSZ-PRET-ZM

Ref. 42250



OLEK
A08505
Ref. arch B8505

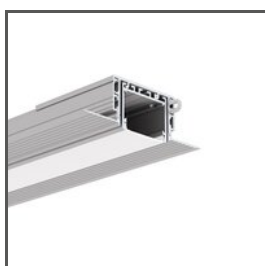


PDS-ZM-PLUS
A02056
Ref. arch C2056



PDS-ZMG
A01418
Ref. arch C1418

RELATED SYSTEMS > GENERAL LIGHTING SYSTEMS

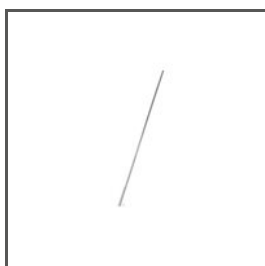


3035-KOZE
A08441+A18056
Ref. arch 18056+B8441



PK-4
A18044+A00370
Ref. arch 18044+C0370

RELATED ACCESSORIES > OTHER RELATED ACCESSORIES > WIRES AND RODS



ROD
100 PUSZ 1 m
42518