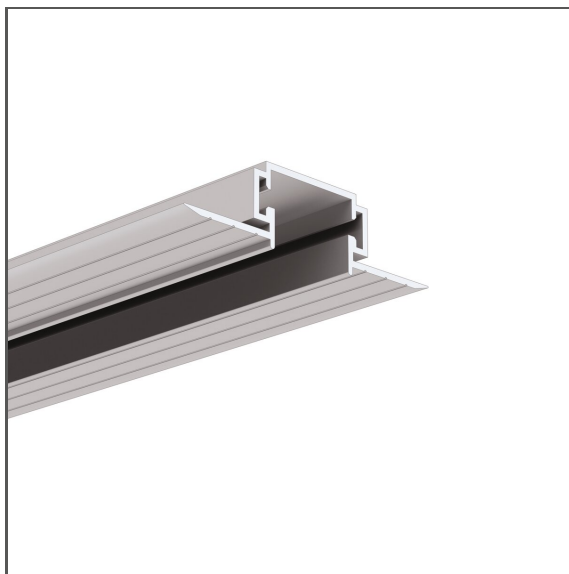


Profile TPK-4

Ref. A18044

Ref. arch 18044



- Mounting track
- Easy servicing of the OPK-4 Profile
- Mounting to drywall
- No collision with the ceiling structure
- Non visible aluminum elements

APPLICATION

- makes mounting and service of the OPK-4 profile easy

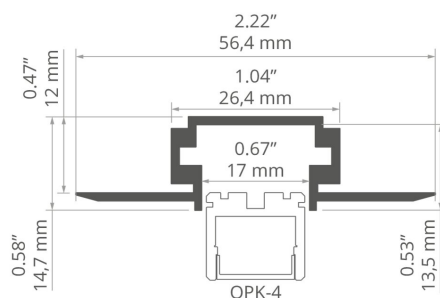
MOUNTING

- in drywall, with mounting adhesive
- can be easily connected into runs and systems


ADDITIONAL INFORMATION

- smooth transition from a recessed into a suspended fixture
- standard lengths of KLUŚ profiles and covers: 1000 mm (tolerance ± 1.5 mm) and 2005 mm / 3010 mm (tolerance + 5 mm); for selected covers: 6050 mm, 10050 mm (tolerance + 5 mm)
- when choosing a different length of profiles / covers than available in the standard, you should additionally choose the cutting service at KLUŚ

TECHNICAL DRAWING



TECHNICAL SPECIFICATIONS

Material	aluminum
Color	 silver non anodized
Possible fixture shapes	polygonal
Profile cross-section	rectangular
Width	56.4 mm
Height	14.7 mm
Building type	Commercial, Residential, HoReCa object, Entertainment/ Arts
Facility zone	communication routes and corridors, wall lighting, lobby / foyer, industrial and technical
Can be easily connected into runs	yes
Mounting to drywall	yes
To cover with plaster	yes
Wire out back of extrusion	yes

Length	Ref
1000 mm	A18044N_1 18044NA_1
2005 mm	A18044N_2 18044NA_2
3010 mm	A18044N_3 18044NA_3

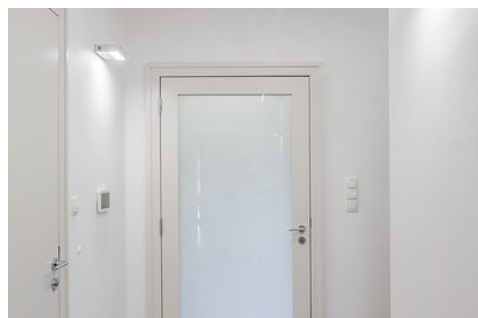
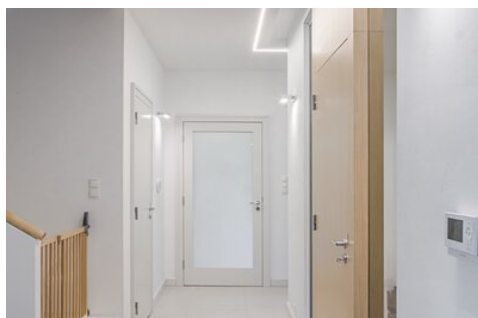
Profile TPK-4

Ref. A18044

Ref. arch 18044

KLUŚ Inspiring
Solutions

SAMPLE PROJECTS



RELATED PROFILES > ARCHITECTURAL



OPK-4

A00370

Ref. arch C0370

RELATED ACCESSORIES > RELATED END CAPS

NAME		MATERIAL	COLOR	REF.
TPK-4		ABS	gray	C24239C02 24239

RELATED ACCESSORIES > OTHER RELATED ACCESSORIES > ADDITIONAL ITEMS



DISASSEMBLY PLATES

PK-4

Z70261

Ref. arch 70261

RELATED ACCESSORIES > OTHER RELATED ACCESSORIES > CONNECTORS

Profile TPK-4

Ref. A18044

Ref. arch 18044



CONNECTOR

ZM-180

C28075N00

Ref. arch 40693



CONNECTOR

ZM-NA-120

C28242N00

Ref. arch 42729

RELATED ACCESSORIES > OTHER RELATED ACCESSORIES > OTHER



GLAND

6x1,2

C24517C07

Ref. arch 00802