

PRODUCT DESCRIPTION

Fastener with increased load capacity, used for hanging fixtures on steel cables. In addition, it can be used as a connection for one pole of electricity as the [steel cable with Cu core](#) can be conductive. Attached to the extrusion with a screw through a drilled hole. The power cable can be inserted into the fastener through the hole in the screw head.

Fill empty fields

Product nr.

Fixture type

Company

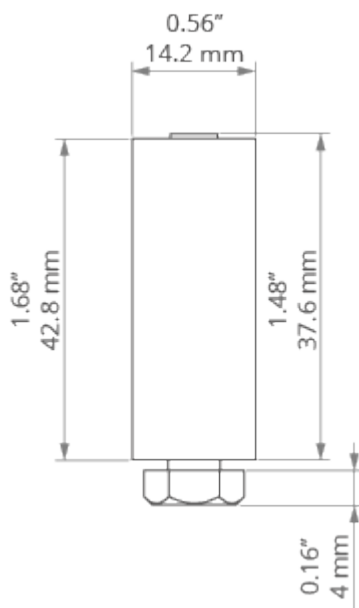
Job name

Date



TECHNICAL SPECIFICATION

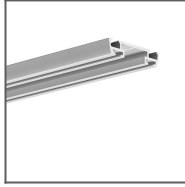
TECHNICAL DRAWING



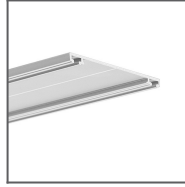
RELATED PROFILES



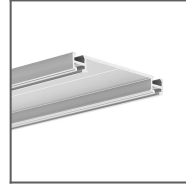
TEST-36 Profile
Ref: B6639



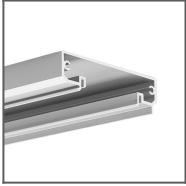
TEST-74 Profile
Ref: W4507



TETRA-43 Profile
Ref: W4476



TETRA-78 Profile
Ref: W4508



TESPO Profile
Ref: 18020

RELATED PRODUCTS

ACCESSORIES



Steel cable with
Cu FI 0.95 mm
core
Ref: 70240