

## PRODUCT DESCRIPTION

Fastener with increased load capacity, used for hanging fixtures on a steel cable. In addition, it can be used as a connection for one pole of electricity as the [steel cable with Cu core](#) can be conductive. Mounted in the guide (large lock) of the selected profile. The power cable can be inserted through the hole drilled in the extrusion and further through the channel in the fastener

Fill empty fields

Product nr.

Fixture type

Company

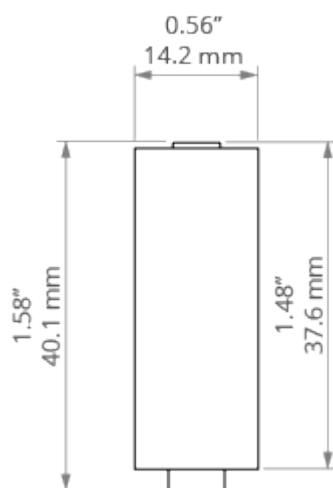
Job name

Date

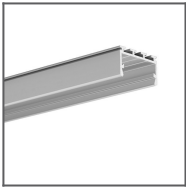


## TECHNICAL SPECIFICATION

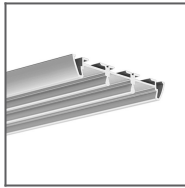
## TECHNICAL DRAWING



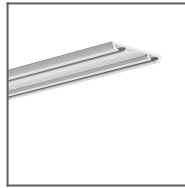
**RELATED PROFILES**



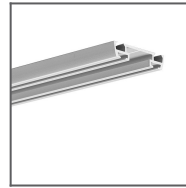
GIZA-LL profile  
Ref: C0758



TRIADA Profile  
Ref: B4476



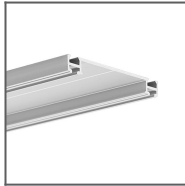
TEST-36 Profile  
Ref: B6639



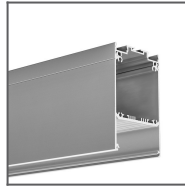
TEST-74 Profile  
Ref: W4507



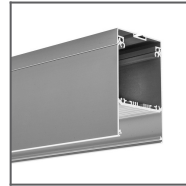
TETRA-43 Profile  
Ref: W4476



TETRA-78 Profile  
Ref: W4508



DES Profile  
Ref: 18030



GLADES Profile  
Ref: 18036



TESPO Profile  
Ref: 18020

## RELATED PRODUCTS

### ACCESSORIES



Steel cable with  
Cu Fl 0.95 mm  
core  
Ref: 70240

### MARKETING MATERIALS



Display  
P230-90071M  
Ref: 90071M